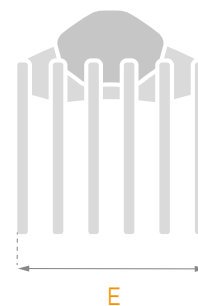
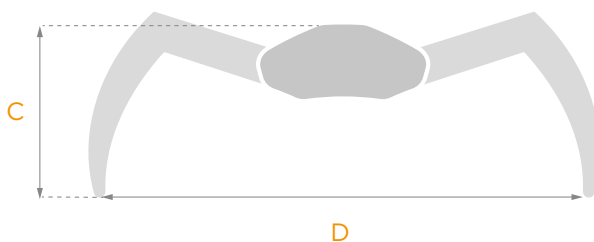
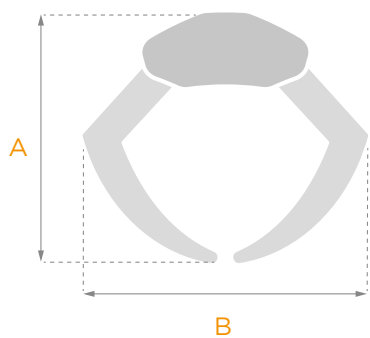
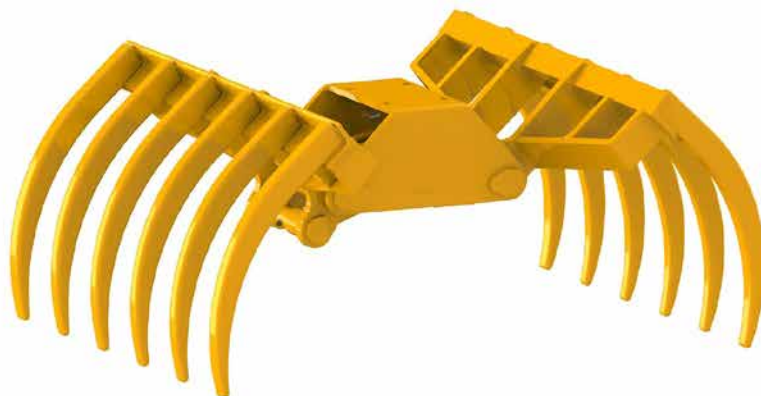
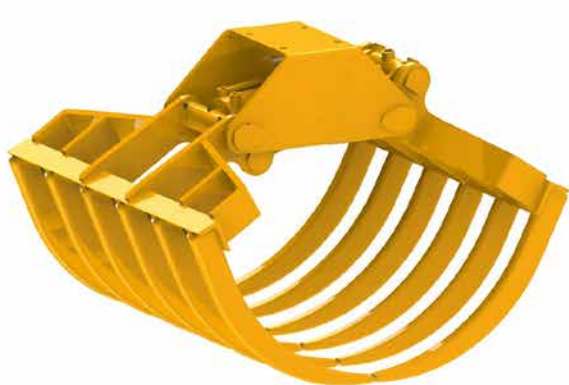



FOTB / FOTB L

Forca a cilindro orizzontale per lavori agricoli

Grab with horizontal cylinder for agricultural works **EN** | **FR** Fourche à vérin horizontal pour les travaux agricoles
 Mistgreifer mit liegendem Zylinder für **DE** | **ES** Horquilla con cilindro horizontal para el trabajo agrícola
 für die landwirtschaftliche Arbeit



Modello Type	Denti Teeth	Peso Kg Weight	Max Bar	 Ton	A	B	C	D	E
FOTB 6	6	110	250	2,0 - 3,0	870	1070	670	1710	1580
FOTB 8	8	130	250	3,0 - 4,0	870	1070	670	1710	1580
FOTB 10	10	145	250	3,0 - 7,0	870	1070	670	1710	1580
FOTB 12	12	165	250	4,0 - 8,0	870	1070	670	1710	1580
FOTB 14	14	185	250	5,0 - 9,0	870	1070	670	1710	1580
FOTB 16	16	205	250	6,0 - 10,0	870	1070	670	1710	1580
FOTB L 8	8	90	200	1,2 - 1,8	870	1070	670	1710	1580
FOTB L 10	10	97	200	1,5 - 2,2	870	1070	670	1710	1580
FOTB L 12	12	110	200	1,8 - 2,5	870	1070	670	1710	1580

L = Serie Leggera / Light Serie