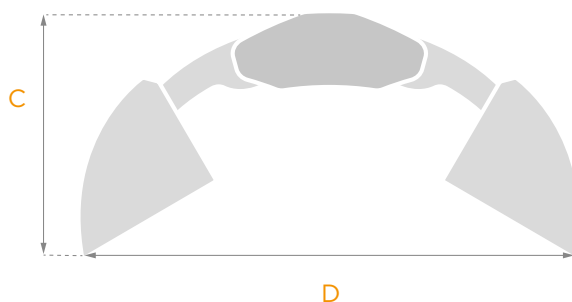
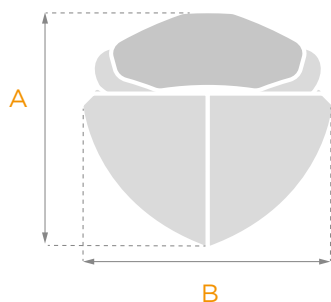
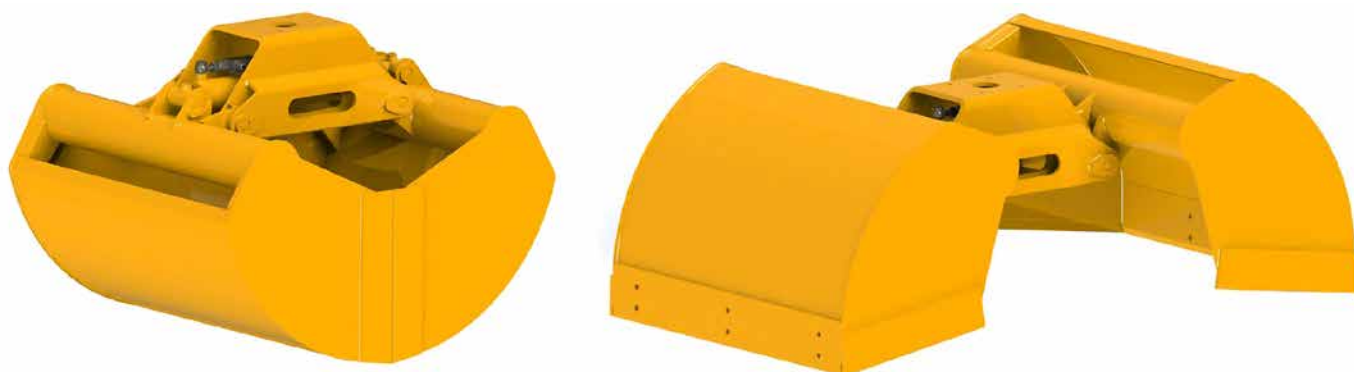



BOT L

Benna **bivalve** grande capacità/apertura per **materiali differenti**

Clamshell bucket large opening/capacity for different materials **EN** | **FR** Benne preneuse grande ouverture/capacité plusieurs matériaux
 Clamshell-Eimer mit großer Breite und Öffnung **DE** | **ES** Cuchara bivalva gran apertura/capacidad para materiales diversos



| Modello Type | Cap. L | Portata Kg Load | Peso Kg Weight | Max Bar |  Ton | A | B | C | D | E |
|------------------|-----------|--------------------|-------------------|------------|---|-----|------|-----|------|------|
| BOT L 150 | 150 | 1000 | 260 | 200 | 4,0 - 7,0 | 900 | 1206 | 620 | 1830 | 360 |
| BOT L 210 | 220 | 1000 | 269 | 200 | 4,0 - 7,0 | 900 | 1206 | 620 | 1830 | 430 |
| BOT L 300 | 300 | 1300 | 287 | 200 | 4,0 - 7,0 | 900 | 1206 | 620 | 1830 | 630 |
| BOT L 400 | 400 | 1300 | 296 | 200 | 4,0 - 7,0 | 900 | 1206 | 620 | 1830 | 730 |
| BOT L 450 | 460 | 1300 | 305 | 200 | 4,0 - 7,0 | 900 | 1206 | 620 | 1830 | 830 |
| BOT L 590 | 580 | 1300 | 323 | 200 | 4,0 - 8,0 | 900 | 1206 | 620 | 1830 | 1030 |